

D2S, DLHA Compressors direct or Y Δ Start

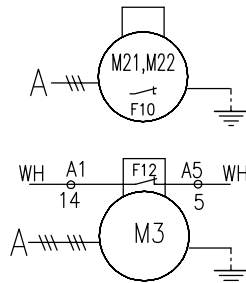
recommended control circuit

M3 : Fan(Cylinder head) thermoprotected (F12)

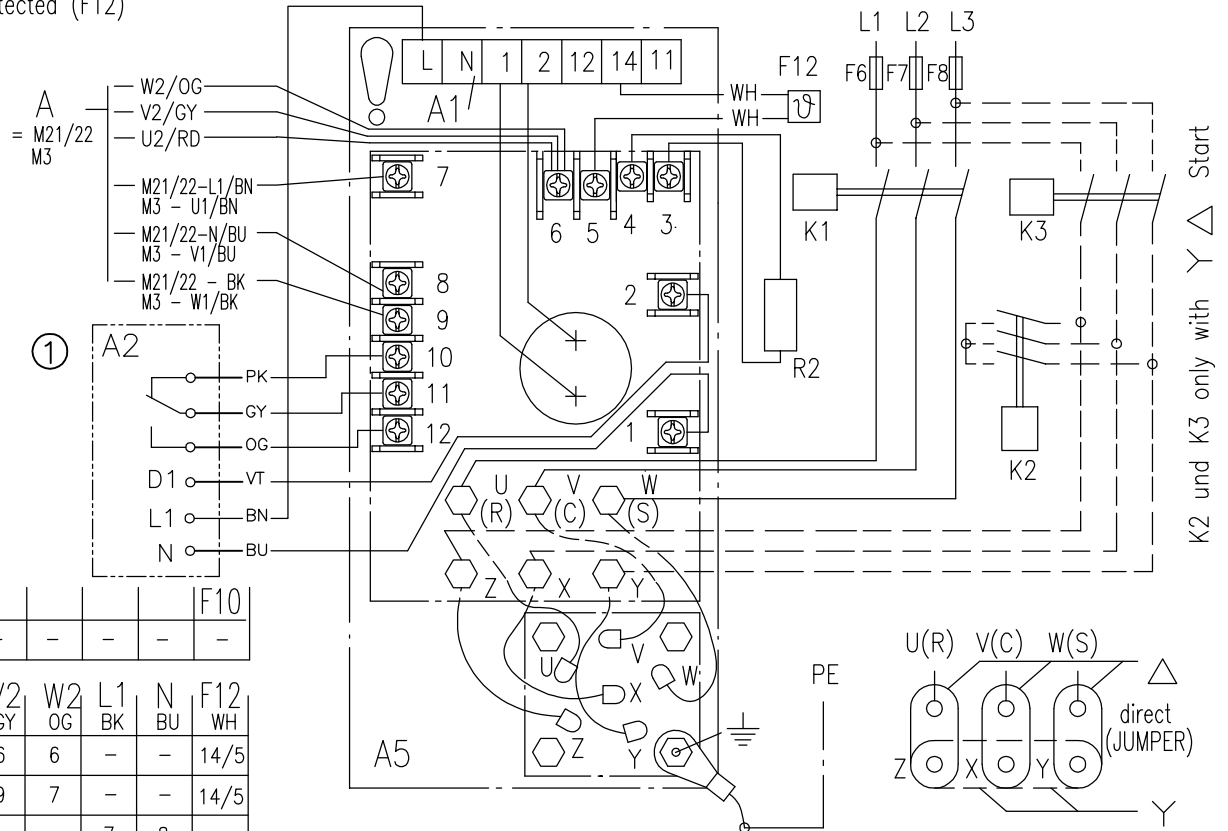
Y 400V±15%/3~/50;60HZ
500V±15%/3~/50HZ

Δ 230V±15%/3~/50;60HZ
230V±15%/1~/50;60HZ

M21/22 : Fans(Condenser)
internal thermal overload switch (F10)
230V±15%/1~/50;60HZ



		A5	N	L1	BK					F10	
1Ph	M21/22	8	7	9	-	-	-	-	-	-	
		A5	U1	V1	W1	U2	V2	W2	L1	N	F12
Y	M3	7	8	9	6	6	6	-	-	-	14/5
Δ		7	8	9	8	9	7	-	-	-	14/5
1Ph		-	-	-	-	-	-	7	8	-	-



Attention Compressor equipped with protection by thermistors.
Connect thermistors only at terminals 1+2 of modul A1.
Do not apply mains voltage. See wiring diagram.
Max. thermistor test voltage 3V.
Cold resistance of thermistors ≤ 750 Ω

