

Date of last update: Apr-16

Ref: CC7.8.5/0416/E

Application Engineering Europe

ZX CLOUD – QUICK INSTALLATION GUIDE

General

ZX Cloud is a remote monitoring system dedicated for use with Copeland EazyCool™ ZX condensing units. Based on information which is stored on a cloud server, it provides real time information about the system operation status and supports operators and service providers in securing refrigeration applications.

The cloud components and monitoring equipment are already mounted and wired inside the condensing unit. This allows for time-saving commission on site.

1 Connect

- Connect the condensing unit with electrical power supply according to the type label.
- Connect the ZX Cloud module with a LAN that provides internet access.



2 Register

Access the internet via link: <https://myzxcloud.emersonclimate.eu>

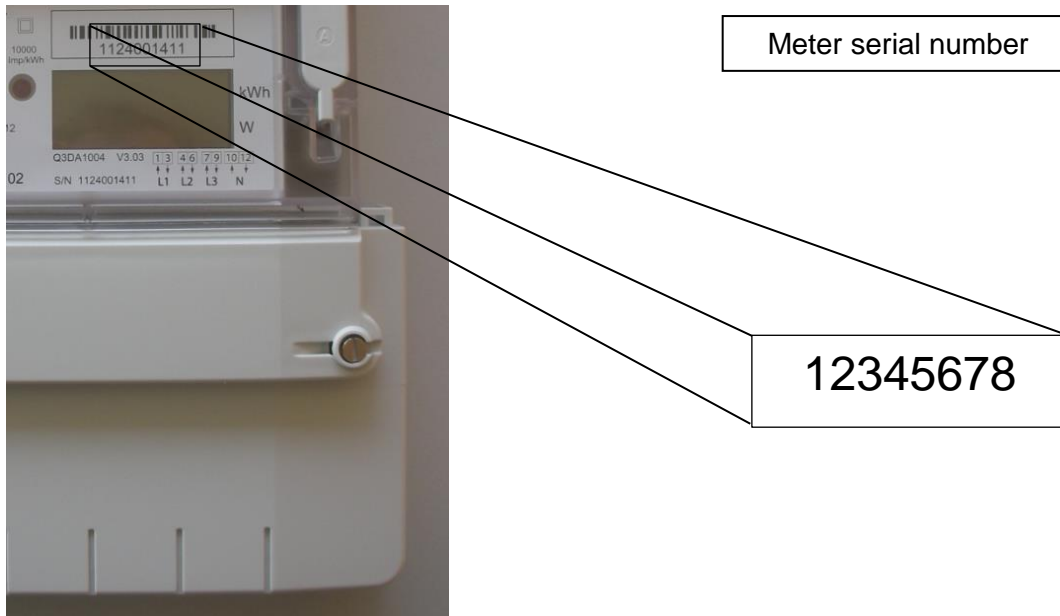
First Time?

You need to register to My ZX Cloud. It's free, and your personal information is safe.

Register Now

Press button

- Enter your data and the meter serial number which is located above the LCD display.
- Shortly afterwards you will receive a confirmation email and a preliminary password.



3 Login

- Login with your password and benefit from the monitoring and service features of MyZXCloud.

Returning User

Username (email)

Password

Remember me next time

[Forgot your password?](#)