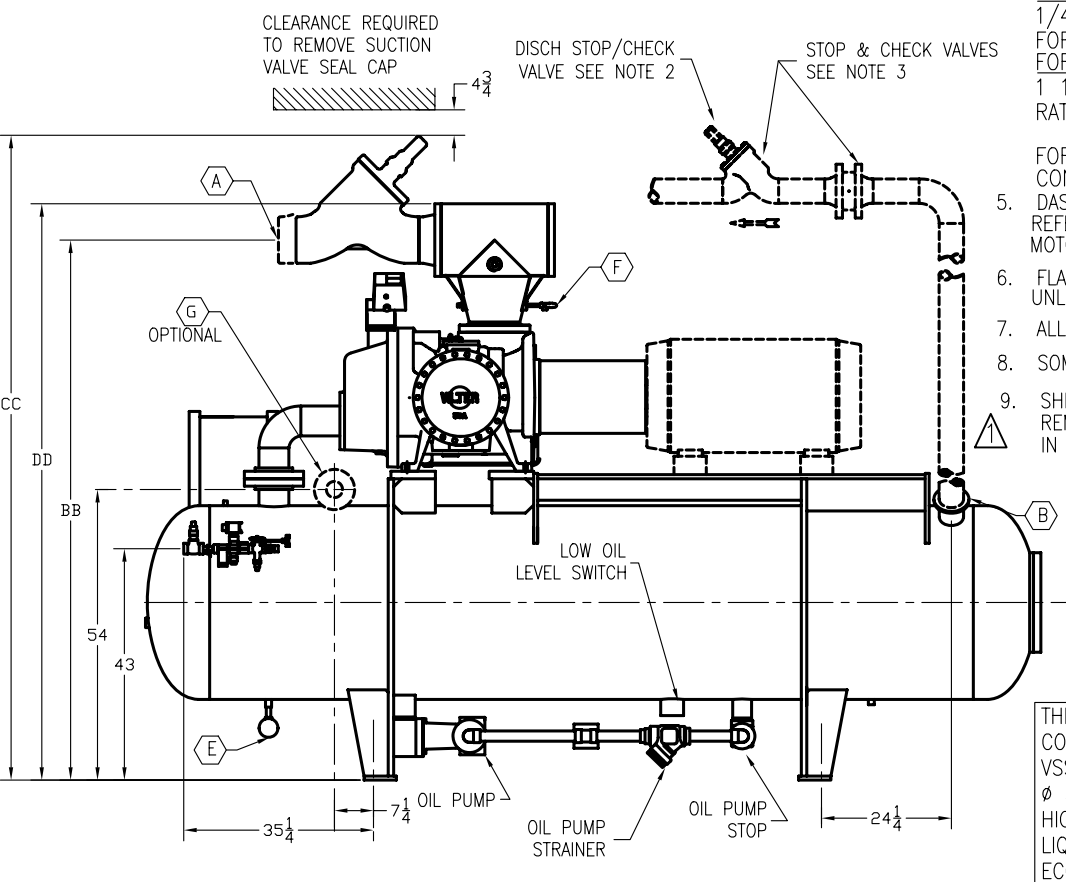
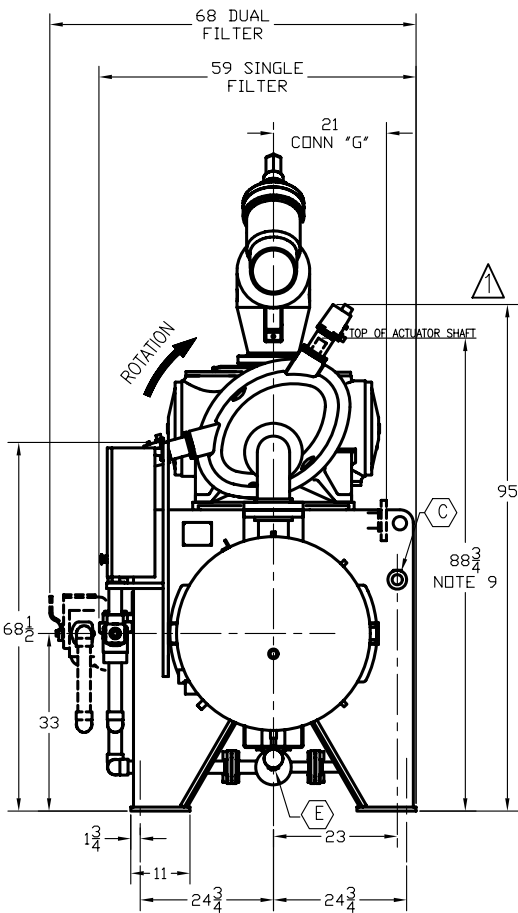
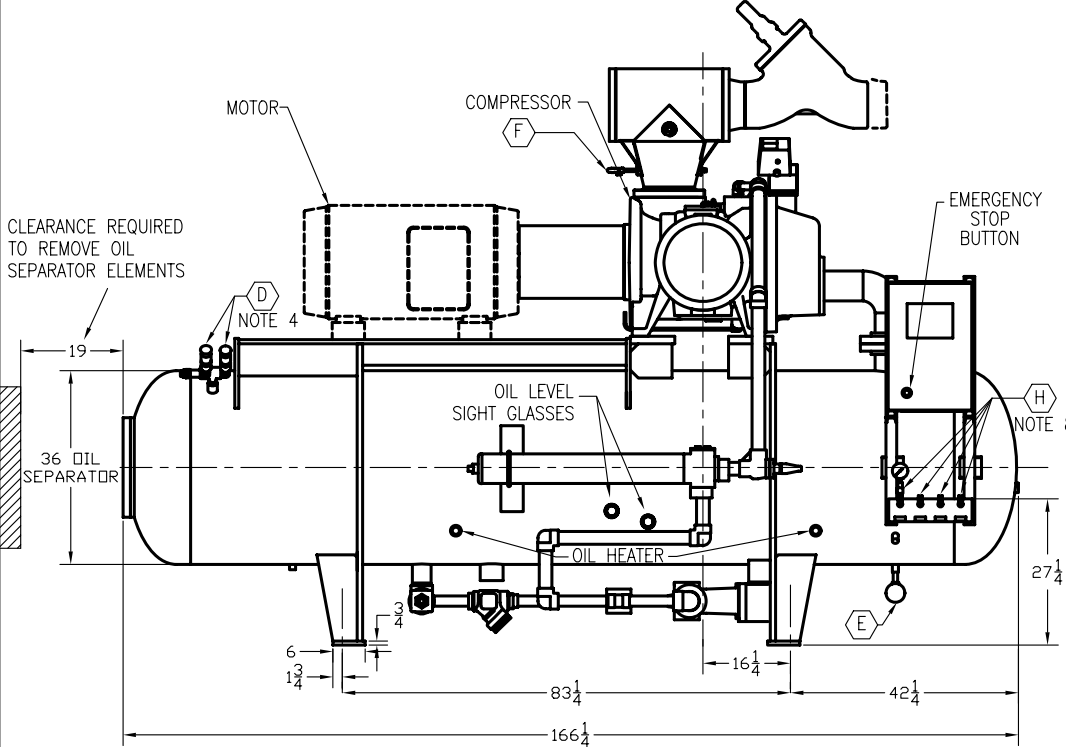


OIL CHARGE	
U.S. GALS (LBS)	
SINGLE FILTER	DOUBLE FILTER
99 (743)	110 (825)

- NOTES>
- ALL DIMENSIONS ARE IN INCHES.
 - A DISCHARGE STOP/CHECK VALVE TO BE SHIPPED LOOSE. MOUNT AS CLOSE TO CONDENSER AS POSSIBLE. IN A HORIZONTAL LINE, VALVE STEM MUST BE IN THE VERTICAL POSITION AS SHOWN. VALVES SIZED PER CONDITIONS.
 - SEPARATE DISCHARGE STOP & CHECK VALVES ARE OPTIONAL AND SHIPPED LOOSE.
 - DUAL RELIEF VALVE TO BE SHIPPED LOOSE. FOR AMMONIA: VALVE IS SET AT 250 PSIG. IT HAS 1" INLET X 1 1/4" OUTLET CONNECTIONS RATED FOR 85.4 LBS AIR/MIN. FOR R-22: VALVE IS SET AT 300 PSIG. IT HAS 1 1/4" INLET X 1 1/2" OUTLET CONNECTIONS RATED FOR 160.2 LBS AIR/MIN. FOR R-507: VALVE IS SET AT 300 PSIG. IT HAS 1 1/4" INLET X 1 1/2" OUTLET CONNECTIONS RATED FOR 138.1 LBS AIR/MIN. FOR R-134a: VALVE IS SET AT 300 PSIG. IT HAS 1 1/4" INLET X 1 1/2" OUTLET CONNECTIONS RATED FOR 138.1 LBS AIR/MIN.



- FOR ALL OTHER REFRIGERANTS CONTACT THE FACTORY.
- DASHED MOTOR (FRAME 449 TS) IS SHOWN FOR REFERENCE ONLY. SEE TABLE 2 AND MOTOR DATA SHEET FOR DETAILS.
- FLANGE BOLT HOLES STRADDLE CENTERLINES UNLESS OTHERWISE NOTED.
- ALL PRESSURE GAUGES WILL SHIP LOOSE.
- SOME DETAILS HAVE BEEN REMOVED FOR CLARITY.
- SHIPPING HEIGHT WITHOUT ACTUATOR. REMOVAL OF ACTUATOR SHAFT RESULTS IN A 2-1/2" REDUCTION OF HEIGHT.

THIS DRAWING IS SUITABLE FOR COUNTER-CLOCKWISE 350mm VSS COMPRESSOR VSS 1501 AND 1801 Ø 36.00 OIL SEPARATOR HIGH STAGE, BOOSTER, OR SWING LIQUID INJECTION OIL COOLING ECON-O-MIZER (STD OR OVERSIZE CONNECTIONS) SINGLE OR DUAL FILTERS

CONNECTION SCHEDULE			
I.D.	SIZE	CONNECTION	FUNCTION
A	SEE CHART A	BUTT WELD (SCH. 40)	SUCTION INLET
B	5.00	BUTT WELD (SCH. 40)	DISCHARGE OUTLET
C	.500-14	IPT	HI-PRESS LIQ INJ 1THRU 20 TX VALVE
	1.0-14	IPT	HI-PRESS LIQ INJ 33 TO 85 TX VALVE
D	.500-14	IPT	PRESSURE RELIEF SEE NOTE 4
E	.500-14	IPT	OIL DRAIN & CHARGER WHEN UNIT NOT RUNNING
F	.250-18	IPT	OIL CHARGER WHEN UNIT IS RUNNING
G	2.00-300#	ANSI FLANGE	STANDARD ECON-O-MIZER INLET
	4.00-300#	ANSI FLANGE	OVERSIZE ECON-O-MIZER INLET
H	.250-18	IPT	TRANSDUCER BLOCK/BLEED

SHIPPING WEIGHT (ADD EACH TABLE FOR ESTIMATED SHIPPING WEIGHT)

TABLE 1		TABLE 2			
SUCTION SIZE	SEPARATOR, SUCTION, PIPING & LI (LBS)	NEMA FRAMES TYPICAL MOTORS			
6"	6680	FRAME (DDP)	WEIGHT (LBS)	FRAME (DDP)	WEIGHT (LBS)
8"	6880	254T	260	365TS	780
TABLE 3		256T	270	404TS	900
OPTIONAL DUAL FILTERS	+274 LBS	284T	360	405TS	975
TABLE 4		286T	400	444TS	1300
COMPRESSOR SIZE	WEIGHT (LBS)	324TS	480	445TS	1475
VSS-1501	3180	326TS	540	447TS	1770
VSS-1801	3220	364TS	725	449TS	2135

CHART A (REFER TO ORDER COPY FOR LINE SIZE)			
SUCTION LINE SIZE	STD ARRANGEMENT COMBINED STOP/CHK VALVE		
	AA		
	AMM.	HALD	
6"	5.6	7.0	
8"	12.75	13.75	
OPTL ARRANGEMENT SEPARATE STOP & CHK VALVES			
	AA		
	AMM.	HALD	
6"	9.6	19.0	
8"	17.9	27.9	
FOR BOTH STD OPT ARRANGEMENT			
	BB	CC	DD
6"	98.0	115.6	105
8"	100.6	120.0	108

ITEM	SYM	REVISION	BY DRAWN	BY APPR.	DATE
R1	△	ADDED SEVERAL SHIPPING HEIGHTS & NOTE 9. ECN: S050329	JDS	RPK	10/4/05
R0		ECN: S040286	RPT	RPK	1/3/05

CONFIDENTIAL PROPERTY OF **VILTER** Since 1867

VILTER MANUFACTURING CORPORATION
CUJAHY, WISCONSIN 53110-8904
TELEPHONE No. (414) 744-0111

DRAWN BY: RPT CHECKED BY: DWP SCALE: NTS
REDRAWN BY: APPROVED BY: RPK DATE: 1/3/05

TITLE: GEN DIMENSIONS 350mm VSS-1501 AND 1801 W/Ø 36.0 SEPARATOR
FOR: LIQUID INJECTION OIL COOLING
DRAWING NO. 27762-1 R1