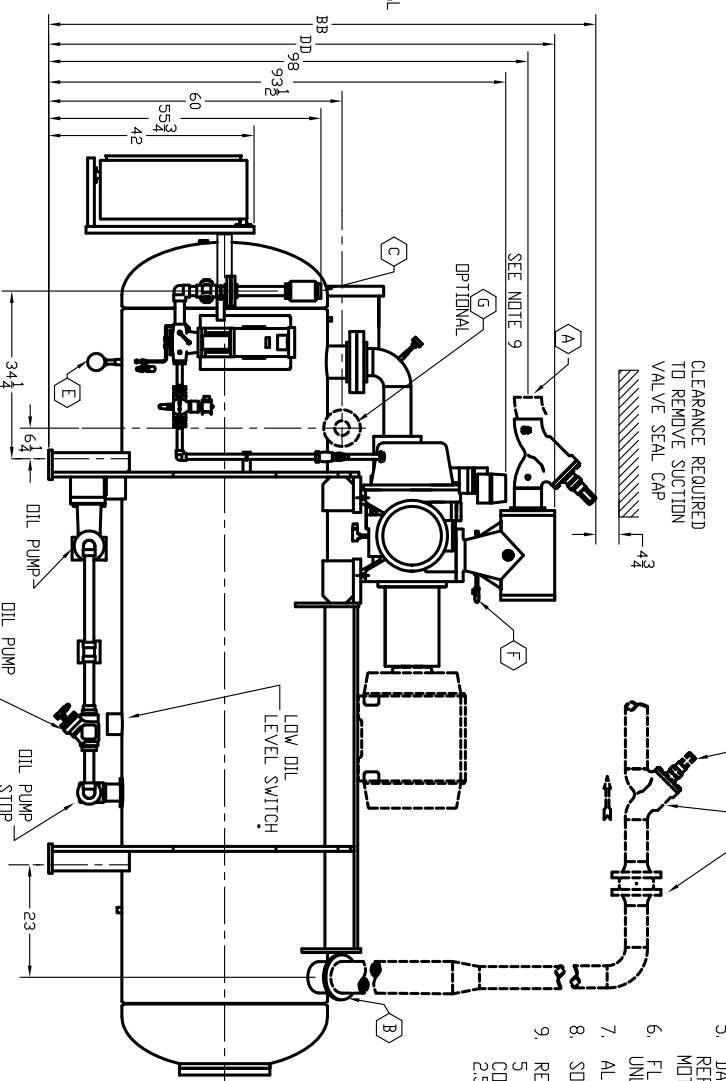
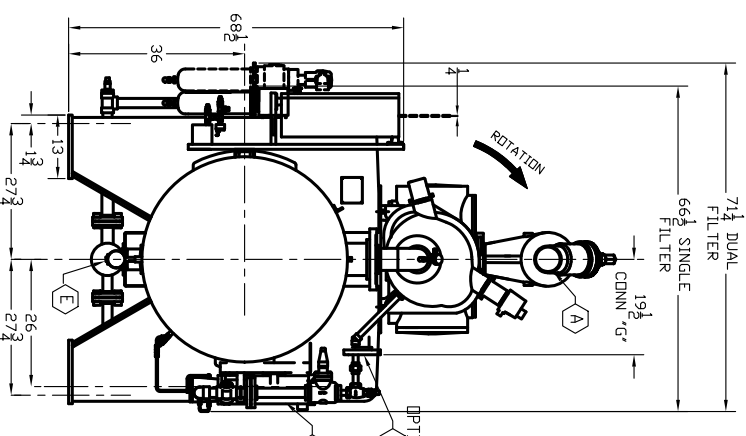
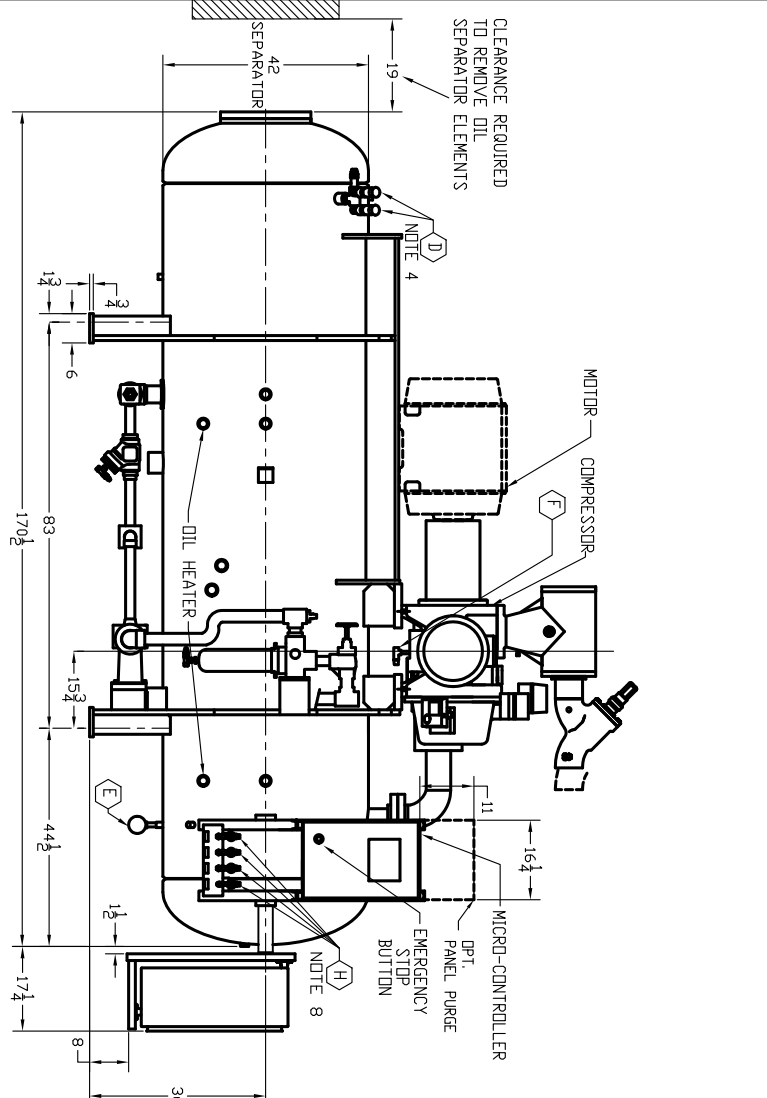
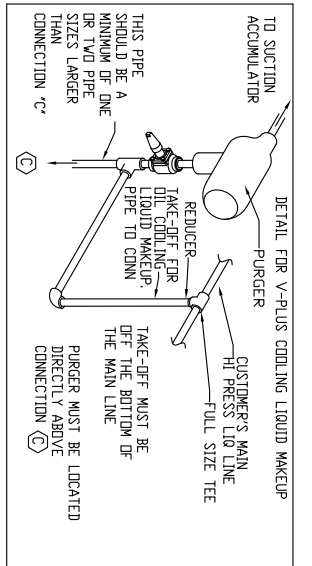


OIL CHARGE	
U.S. GALS (LBS)	
SINGLE FILTER	DOUBLE FILTER
152(1138)	157(1175)



- NOTES)
1. ALL DIMENSIONS ARE IN INCHES.
 2. A DISCHARGE STOP/CHECK VALVE TO BE SHIPPED LOOSE. "MOUNT" AS CLOSE TO CONDENSER AS POSSIBLE. IN A HORIZONTAL LINE. VALVE STEM MUST BE IN THE VERTICAL POSITION AS SHOWN. VALVES SIZED PER CONDITIONS.
 3. SEPARATE DISCHARGE STOP & CHECK VALVES ARE OPTIONAL AND SHIPPED LOOSE.
 4. DUAL RELIEF VALVE TO BE SHIPPED LOOSE. FOR AMMONIA VALVE IS SET AT 250 PSIG. IT HAS 1" INLET X 1 1/4" OUTLET CONNECTIONS. FOR R-507 VALVE IS SET AT 300 PSIG. IT HAS 1 1/4" INLET X 1 1/2" OUTLET CONNECTIONS. FOR R-134g VALVE IS SET AT 300 PSIG. IT HAS 1 1/4" INLET X 1 1/2" OUTLET CONNECTIONS RATED FOR 1381 LBS AIR/MIN. IT HAS 1 1/4" INLET X 1 1/2" OUTLET CONNECTIONS RATED FOR 1381 LBS AIR/MIN FOR ALL OTHER REFRIGERANTS CONTACT THE FACTORY.
 5. DASHED MOTOR FRAME 444 TS) IS SHOWN FOR REFERENCE ONLY. SEE TABLE 2 AND MOTOR DATA SHEET FOR DETAILS.
 6. FLANGE BOLT HOLES STRADDLE CENTERLINES UNLESS OTHERWISE NOTED.
 7. ALL PRESSURE GAUGES WILL SHIP LOOSE.
 8. SOME DETAILS HAVE BEEN REMOVED FOR CLARITY.
 9. REMOVAL OF ACTUATOR MOTOR WILL RESULT IN A 5 INCH HEIGHT REDUCTION. REMOVAL OF THE COMMAND SHAFT WILL RESULT IN AN ADDITIONAL 2.5 INCHES OF HEIGHT REDUCTION.

THIS DRAWING IS SUITABLE FOR COUNTER-CLOCKWISE 280mm VSS COMPRESSOR VSS 751 AND 901 Ø 42.00 OIL SEPARATOR HIGH STAGE DR SWING V-PLUS OIL COOLING ECN-D-MIZER (STD DR OVERSIZE CONNECTIONS) SINGLE OR DUAL FILTERS

CONNECTION SCHEDULE

ID.	SIZE	CONNECTION	FUNCTION
A	SEE CHART A	BUTT WELD (SCH. 40)	SUCTION INLET
B	6.00	BUTT WELD (SCH. 40)	DISCHARGE OUTLET
C	1.0, 1.5, OR 2.0**	SW	HIGH-PRESS. LIQUID INLET V-PLUS
D	500-14	IPT	PRESSURE RELIEF SEE NOTE 4
E	500-14	IPT	OIL DRAIN & CHARGER WHEN UNIT NOT RUNNING
F	250-18	IPT	OIL CHARGER WHEN UNIT IS RUNNING
G	1.50-300#	ANSI FLANGE	STANDARD ECN-D-MIZER INLET
H	250-18	IPT	OVERSIZE ECN-D-MIZER INLET
			TRANSDUCER BLOCK/BLEED

SHIPPING WEIGHT

(ADD EACH TABLE FOR ESTIMATED SHIPPING WEIGHT)

TABLE 1		TABLE 2	
SUCTION SEPARATOR, SUCTION SIZE & V-PLUS (LBS)	6780	NEMA FRAMES TYPICAL MOTORS	WEIGHT (LBS)
6"	6870	FRAME (DDP)	FRAME (DDP)
TABLE 3		TABLE 4	
OPTIONAL DUAL FILTERS	+75 LBS	COMPRESSOR SIZE (LBS)	WEIGHT (LBS)
TABLE 4		VSS-751	1600
VSS-751	1600	VSS-901	1650
VSS-901	1650		


CHART A

REFER TO ORDER COPY FOR LINE SIZES

SUCTION LINE SIZE	STD ARRANGEMENT FOR BOTH STD. OPT. COMBINED STOP/CHK VALVE	FOR STD. OPT ARRANGEMENT	OPT. ARRANGEMENT FOR BOTH STD. OPT. SEPARATE STOP & CHK VALVES	TOP OF STRAINER HOUSING
6"	AA	BB	AA	DD
5"	AA	BB	AA	DD
4"	AA	BB	AA	DD
3"	AA	BB	AA	DD
2"	AA	BB	AA	DD

REV	DATE	BY	APP.	REVISION
R0	4/10/06	JDS	RPK	REFERENCE 27758-1 FOR ORIGINAL ECN: S050187

CONFIDENTIAL
PROPERTY OF



VILTER MANUFACTURING, LLC
CUDAHY, WISCONSIN 5310-8904
TELEPHONE NO. (414) 744-0111

DRAWN BY: JDS
CHECKED BY: RPK
DATE: 4/10/06

REDESIGNED BY: JDS
APPROVED BY: RPK
SCALE: NTS

TITLE: GEN DIMENSIONS 280mm VSS-751 AND 901 W/Ø 42.0 SEPARATOR FOR V-PLUS OIL COOLING, AC DRIVE

DRAWING NO. 27758-5 R0