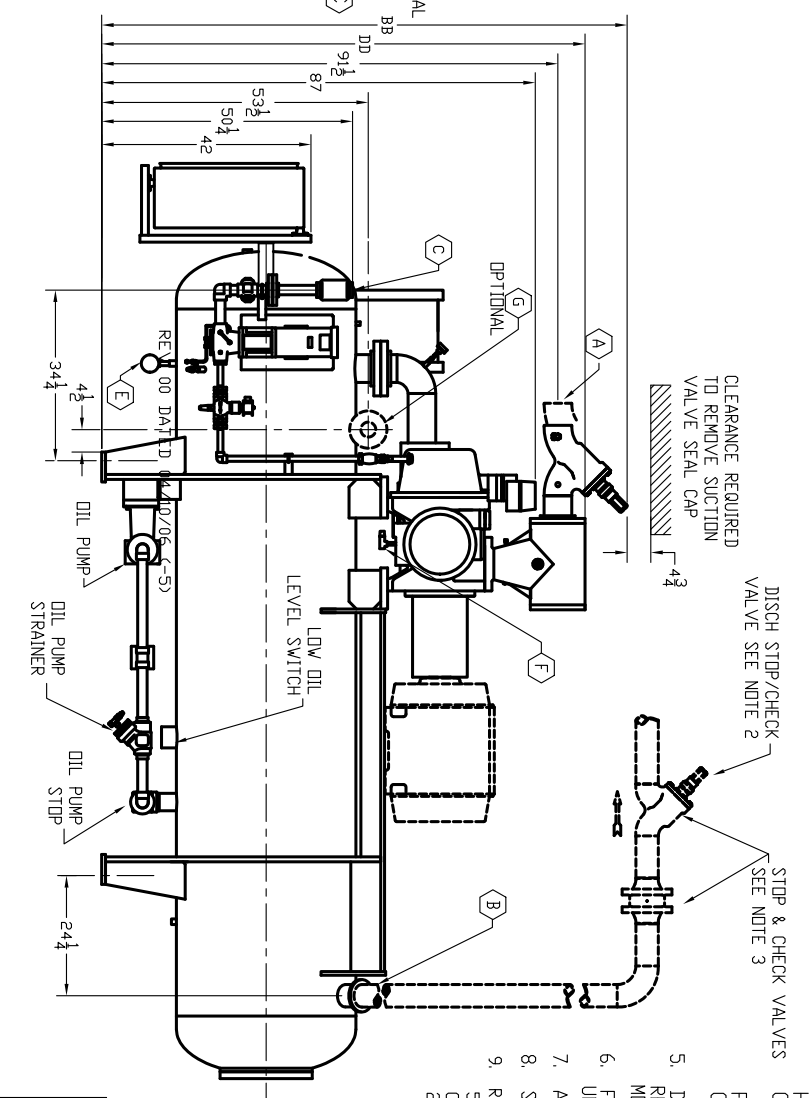
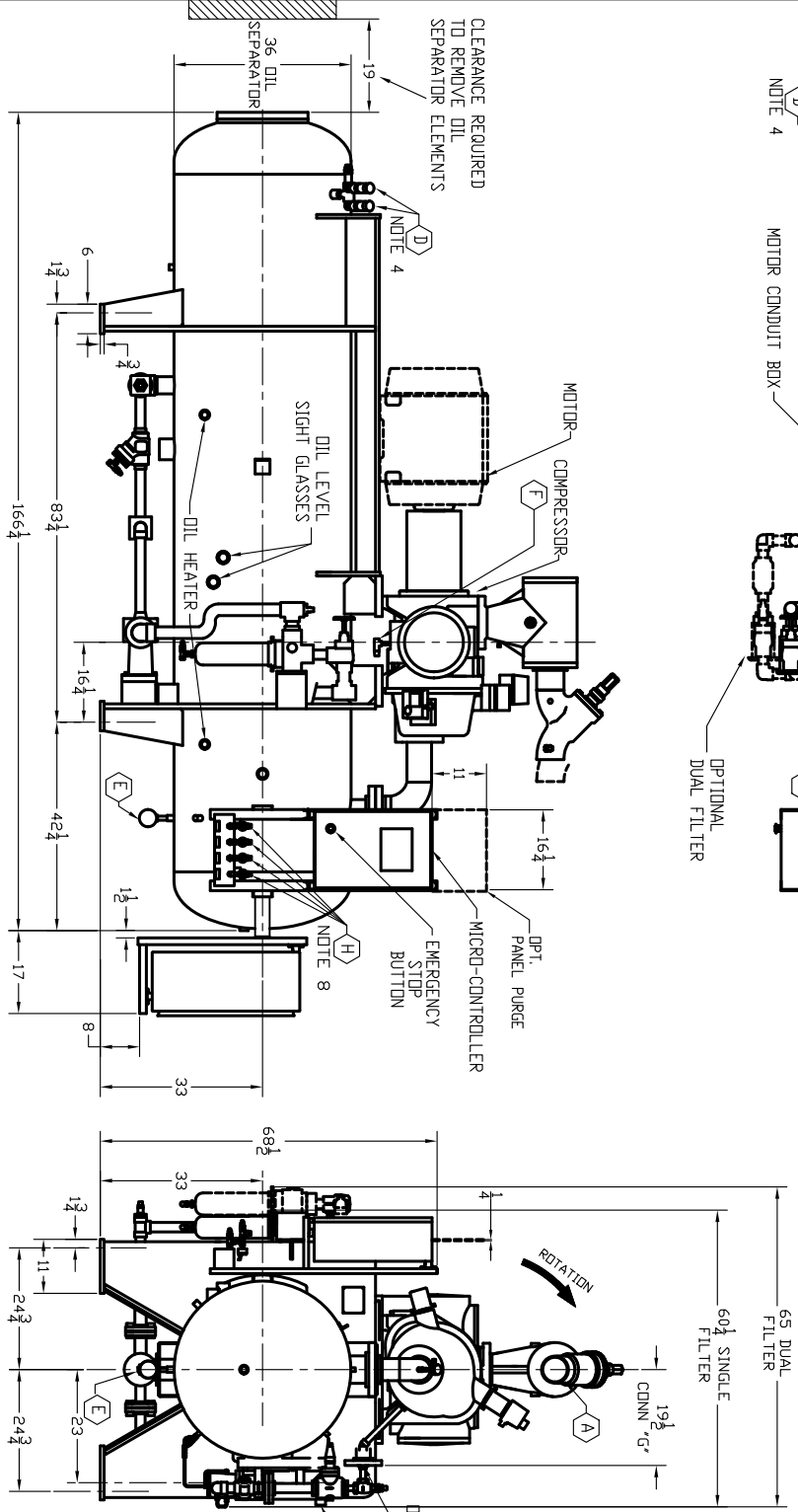


DIL CHARGE	U.S. GALS (LBS)
SINGLE FILTER	105 (786)
DOUBLE FILTER	110 (825)



- NOTES)
1. ALL DIMENSIONS ARE IN INCHES.
  2. A DISCHARGE STOP/CHECK VALVE TO BE SHIPPED LOOSE. MOUNT AS CLOSE TO CONDENSER AS POSSIBLE. IN A HORIZONTAL LINE VALVE STEM MUST BE IN THE VERTICAL POSITION AS SHOWN. VALVES SIZED PER CONDITIONS.
  3. SEPARATE DISCHARGE STOP & CHECK VALVES ARE OPTIONAL AND SHIPPED LOOSE.
  4. DUAL RELIEF VALVE TO BE SHIPPED LOOSE. FOR AMMONIA: VALVE IS SET AT 250 PSIG. IT HAS 1" INLET X 1 1/4" OUTLET CONNECTIONS. FOR R-22: VALVE IS SET AT 300 PSIG. IT HAS 1 1/4" INLET X 1 1/2" OUTLET CONNECTIONS. FOR R-507: VALVE IS SET AT 300 PSIG. IT HAS 1 1/4" INLET X 1 1/2" OUTLET CONNECTIONS. FOR R-134a: VALVE IS SET AT 300 PSIG. IT HAS 1 1/4" INLET X 1 1/2" OUTLET CONNECTIONS. FOR R-138i: VALVE IS SET AT 300 PSIG. IT HAS 1 1/4" INLET X 1 1/2" OUTLET CONNECTIONS. RATED FOR 138i LBS AIR/MIN.
  5. DASHED MOTOR FRAME 444 TS) IS SHOWN FOR REFERENCE ONLY. SEE TABLE 2 AND MOTOR DATA SHEET FOR DETAILS.
  6. FLANGE BOLT HOLES STRADDLE CENTERLINES UNLESS OTHERWISE NOTED.
  7. ALL PRESSURE GAUGES WILL SHIP LOOSE.
  8. SOME DETAILS HAVE BEEN REMOVED FOR CLARITY.
  9. REMOVAL OF ACTUATOR MOTOR WILL RESULT IN A 5 INCH HEIGHT REDUCTION. REMOVAL OF THE COMMAND SHAFT WILL RESULT IN AN ADDITIONAL 2.5 INCHES OF HEIGHT REDUCTION.

THIS DRAWING IS SUITABLE FOR COUNTER-CLOCKWISE VSS COMPRESSOR VSS 751 AND 901  
 Ø 36.00 OIL SEPARATOR  
 HIGH STAGE OR SWING  
 V-PLUS OIL COOLING  
 ECON-D-MIZER (STD OR OVERSIZE CONNECTIONS)  
 SINGLE OR DUAL FILTERS

SHIPPING WEIGHT

TABLE 1  
SEPARATOR, SUCTION, PIPING & V-PLUS (LBS)

SIZE	5825
CONNECTION	SW

TABLE 2  
TYPICAL MOTORS

FRAME (DHP)	WEIGHT (LBS)	FRAME (DHP)	WEIGHT (LBS)
254T	260	365T	780
256T	270	404T	900
284T	360	405T	975
286T	400	444T	1300
324T	480	445T	1475
326T	540	447T	1770
VSS-901	1650	VSS-901	2135

TABLE 3  
OPTIONAL DUAL FILTERS

TABLE 4 COMPRESSION WEIGHT (LBS)	284T	324T	326T	364T
VSS-751	1600	1600	1600	1600
VSS-901	1650	1650	1650	1650

CHART A  
REFER TO ORDER COPY FOR LINE SIZES

SUCTION LINE SIZE	STD ARRANGEMENT COMBINED STOP/CHK VALVE	FOR BOTH STD DPT ARRANGEMENT	DPT ARRANGEMENT SEPARATE STOP & CHK VALVES	TOP OF STRAINER HOUSING
5"	AA	BB	AA	DD
6"	AA	BB	AA	DD

CONNECTION SCHEDULE

I.D.	SIZE	CONNECTION	FUNCTION
A	SEE CHART A	BUTT WELD (SCH. 40)	SUCTION INLET
B	5.00	BUTT WELD (SCH. 40)	DISCHARGE OUTLET
C	1.0, 1.5, OR 2.0**	SW	HIGH-PRESS. LIQUID INLET V-PLUS
D	.500-14	1PT	PRESSURE RELIEF SEE NOTE 4
E	.500-14	1PT	OIL DRAIN & CHARGER WHEN UNIT NOT RUNNING
F	.250-18	1PT	OIL CHARGER WHEN UNIT IS RUNNING
G	1.50-300#	ANSI FLANGE	STANDARD ECON-D-MIZER INLET
H	2.50-300#	ANSI FLANGE	OVERSIZE ECON-D-MIZER INLET
H	.250-18	1PT	TRANSDUCER BLOCK/BLEED

\*\* VARIES W/ COOLING LOAD

R0	REFERENCE 27757-1 FOR ORIGINAL	JDS	RPK	4/10/06
REV	FCN: S050187	BY	BY	
REV		DATE		

CONFIDENTIAL PROPERTY OF

VILTER MANUFACTURING, LLC  
 CUMMINS, WISCONSIN 5310-8904  
 TELEPHONE NO. (414) 744-0111

DRAWN BY: JDS  
 CHECKED BY: RPK  
 APPROVED BY: RPK  
 DATE: 4/10/06

SCALE: NTS

TITLE: GEN DIMENSIONS 280mm VSS-751 AND 901 W/Ø 36.0 SEPARATOR  
 FOR: V-PLUS OIL COOLING, AC DRIVE

DRAWING NO. 27757-5 R0