

Instruction Sheet

PA-00323

September 2008

ECD Display Unit

ECD Display Unit Mounting Instructions

Description

The **ECD Display Unit** is for use with EC3-Series controllers from Emerson, see table:

Type	EC3-Controller
ECD-000	EC3-612/611, EC3-622/621, EC3-642/641, EC3-672/671, EC3-752/751, EC3-812/811, EC3-922/921
ECD-001	EC3-332/-331
ECD-002	EC3-X33/-X32, EC3-D72/-D73

Safety Instructions

- **Display unit can be damaged if used with others than the above specified controllers.**
- **Keep the temperatures within the specified limits.**

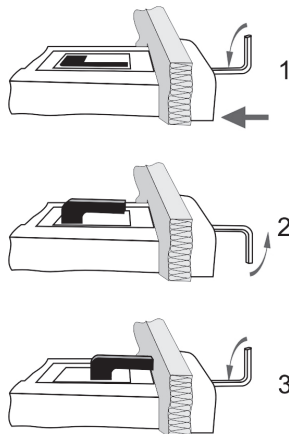
Technical data

Power supply	From EC3 via connecting cable
Display	2½-digit red LED with decimal point
LED Indicators	Up to 7 Indicators, see EC3 Controller Instructions
Temperature	32...+140°F (operating), -4...+149°F (storage)
Humidity	0...80% r.h. non condensing
Protection class	IP65 (front protection with gasket)
Connecting cable	ECC-N30 (9.8 ft.) or CAT5 Cable with RJ45 Plugs

Mounting

The ECD-001 can be mounted in panels with a 2.8" x 1.1" cutout. See dimensional drawing for space requirements.

- Push controller into panel cut-out.(1)
- Insert allen key into front panel holes and turn clockwise. Mounting lugs will turn and gradually move towards panel (2)
- Turn allen key until mounting lug barely touches panel. Then move other mounting lug to the same position (3)
- Tighten both sides very carefully until controller is secured. Do not over tighten as mounting lugs will break easily.



Wiring

Use connecting cable ECC-Nxx or any other standard CAT5-Cable with RJ45 plugs to connect ECD with EC3.

Display

ECD is showing one measured value of the connected EC3 controller. Press the SEL button to scroll through all possible displayable data. After approximately 2 minutes, the display will again display the default value.

In case of an alarm, the display is blinking. The alarm code and the measured value are displayed alternatively.

Consult the controllers operating instructions for a detailed description of all Alarm Codes.

Parameter Setting

The parameter setting is password protected. Password entry and parameter modification is described in the respective EC3 controller operating instructions.

All keys can be alternatively operated with the (optional) Infrared remote control.

Dimensions

